

COSH-Tool

**Characterisation of rapid fluctuations of flow and stage in rivers in
consequence of hydropeaking**

Julie Charmasson, SINTEF Energy Research
Julie.Charmasson@sintef.no

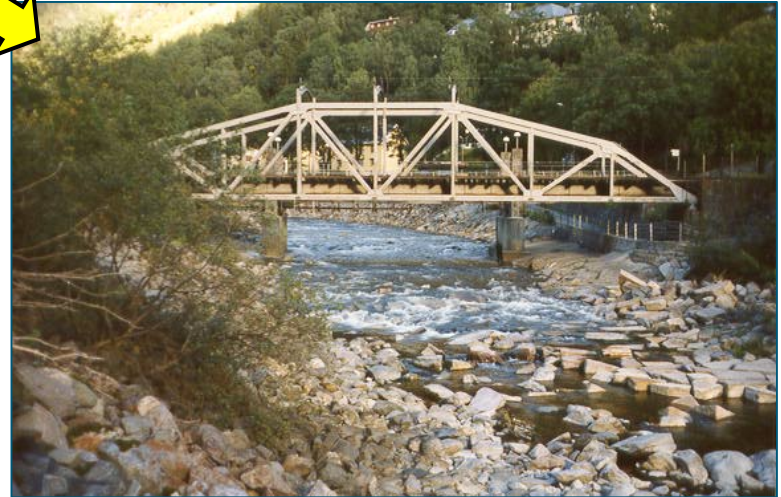
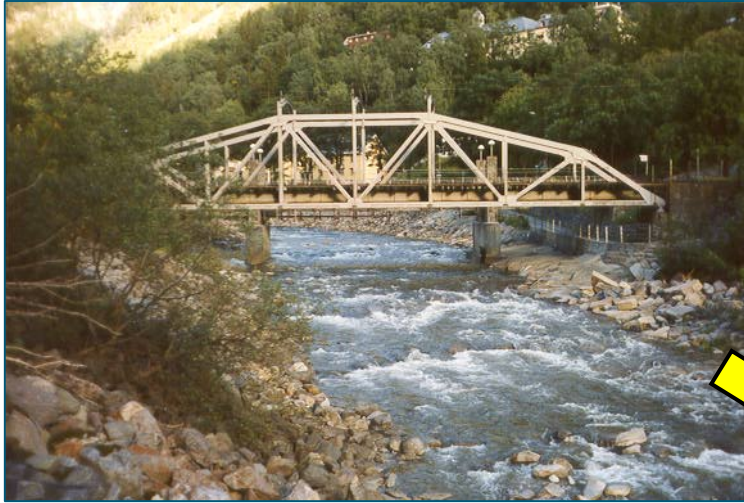
CEDREN

Centre for Environmental Design of Renewable Energy

f m
e
CENTRE FOR
ENVIRONMENT-
FRIENDLY ENERGY
RESEARCH



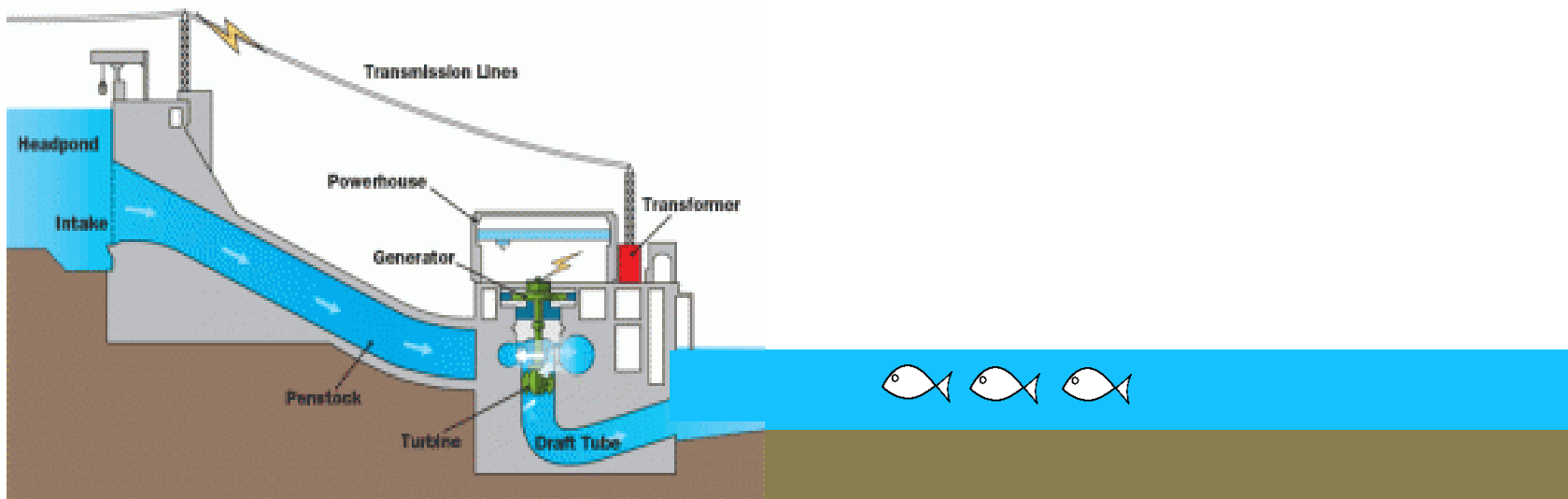
1. Hydropeaking ???



Rapid changes in power **production** by hydro-electric facilities as a consequence of varying electricity generation and **demand** on the electricity market.

1. Hydropeaking ???

- Rapid **fluctuations** of flow and water level
- Impact on **ecosystems** of water bodies downstream of the power plant outlet.

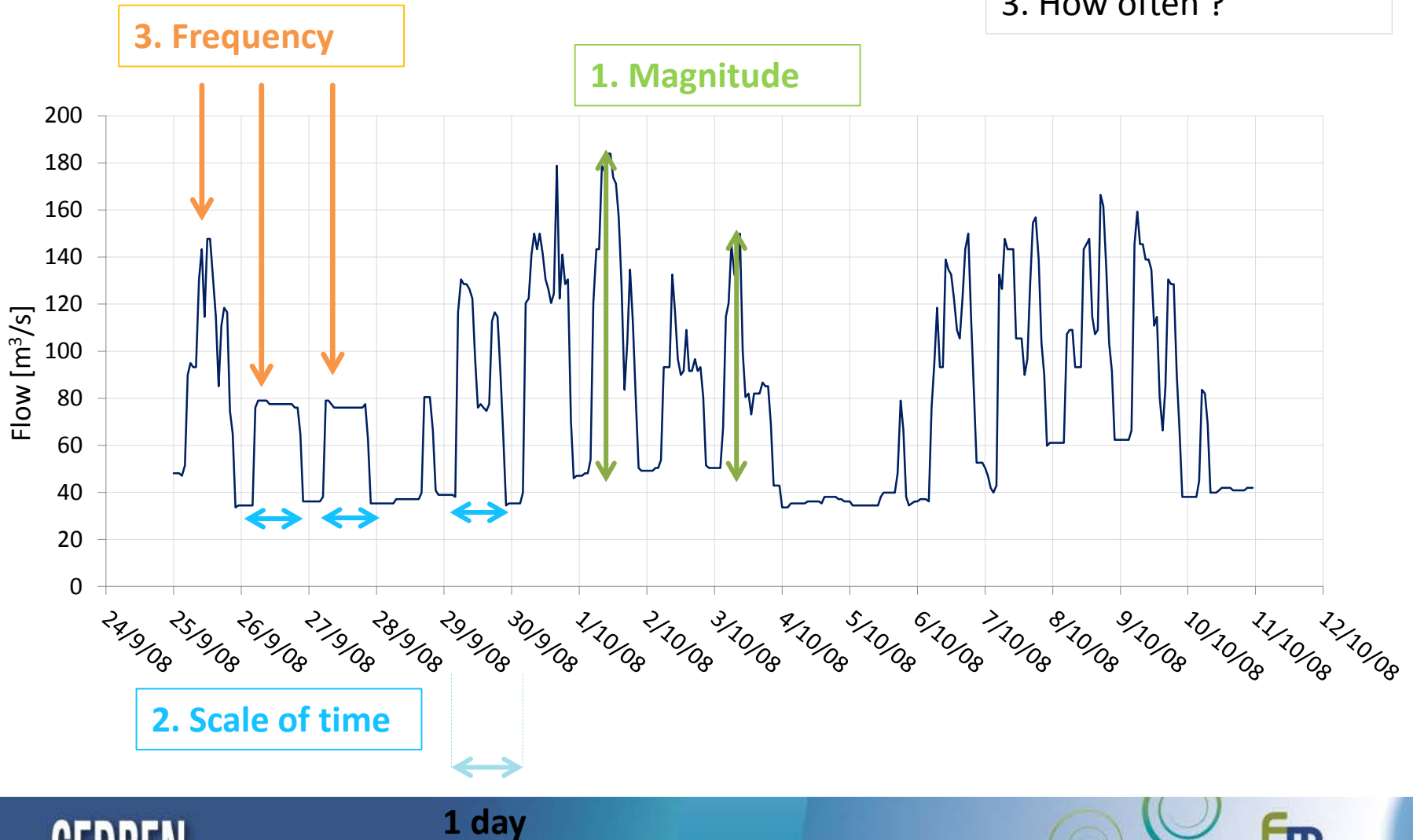


Power plant

Downstream river

1. Hydropeaking ???

- 1. How big?
- 2. When?
- 3. How often ?

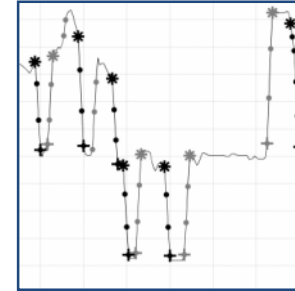


2. COSH-Tool

Characterisation of Stream Hydropeaking - Tool

- ▶ Separation into increases and decreases

Different impacts



- ▶ Light conditions

Seasonal shift in habitat use, diel activity and behaviour of fish

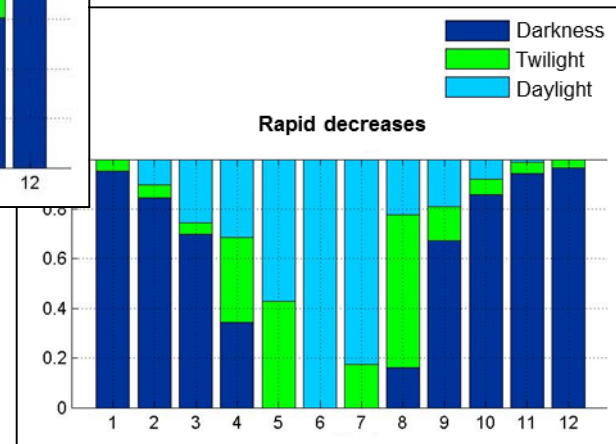
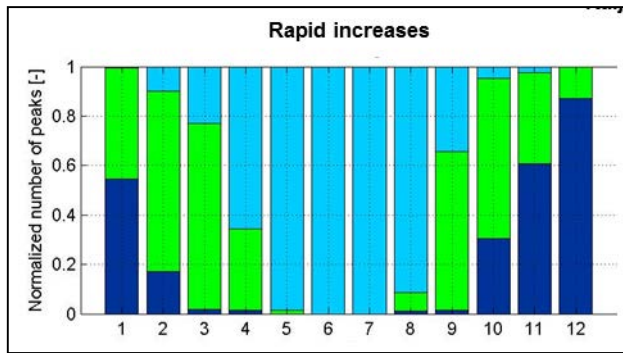


- ▶ Seasonal analysis

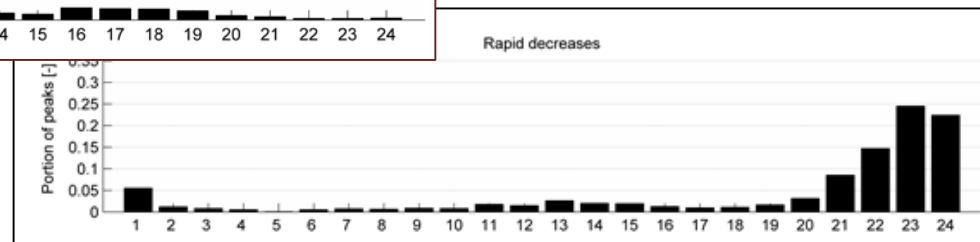
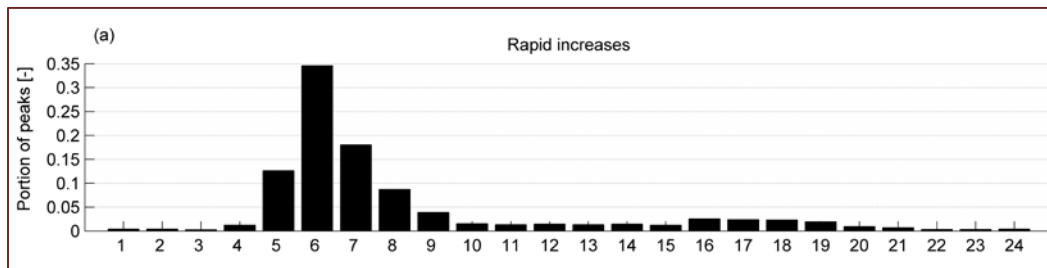


2. COSH-Tool

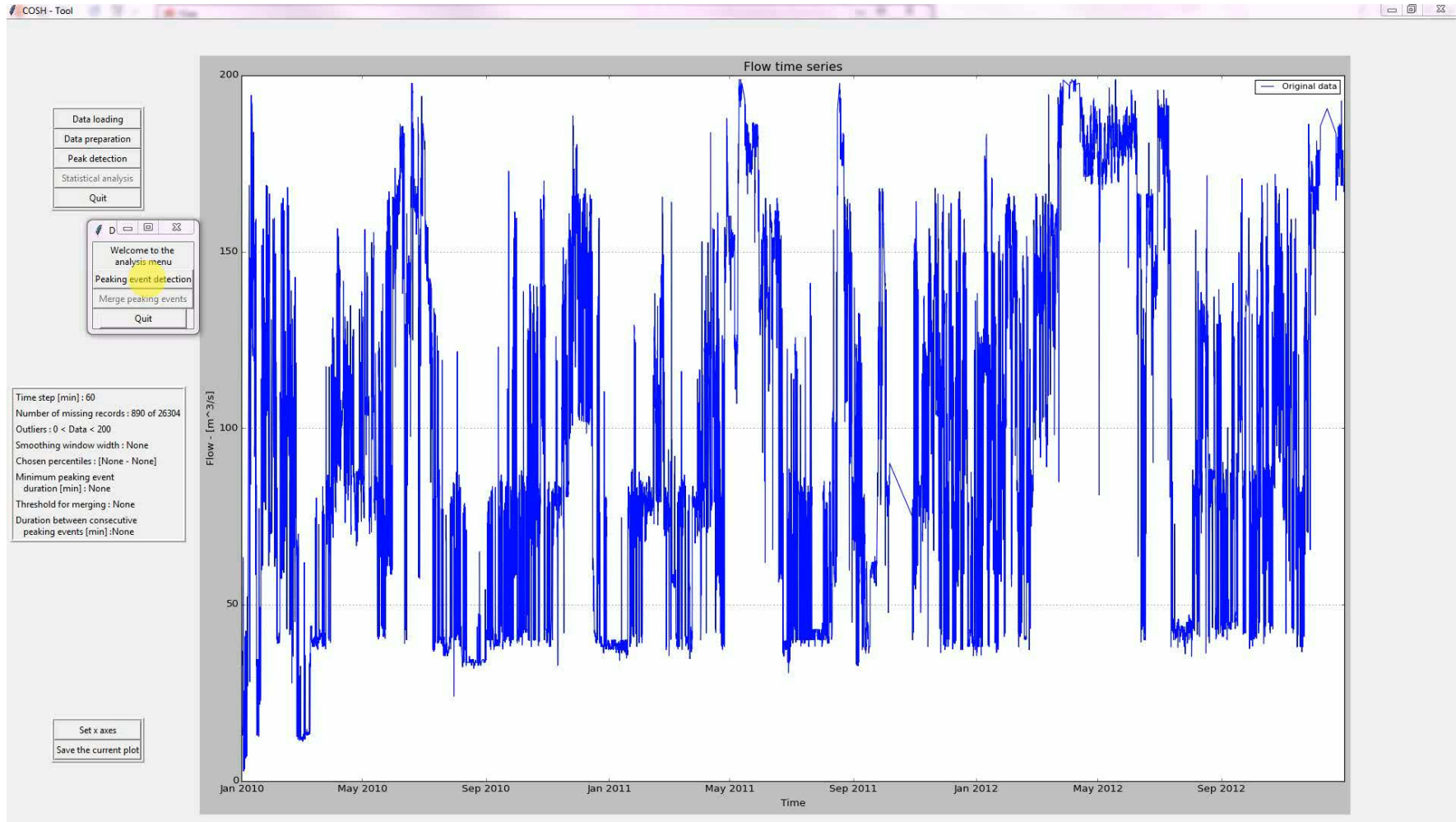
► Light conditions



► Hour of the day



2. COSH-Tool interface



Thank you for your attention!



Photo: J. Sauterleute

Julie.Charmasson@sintef.no

www.cedren.no